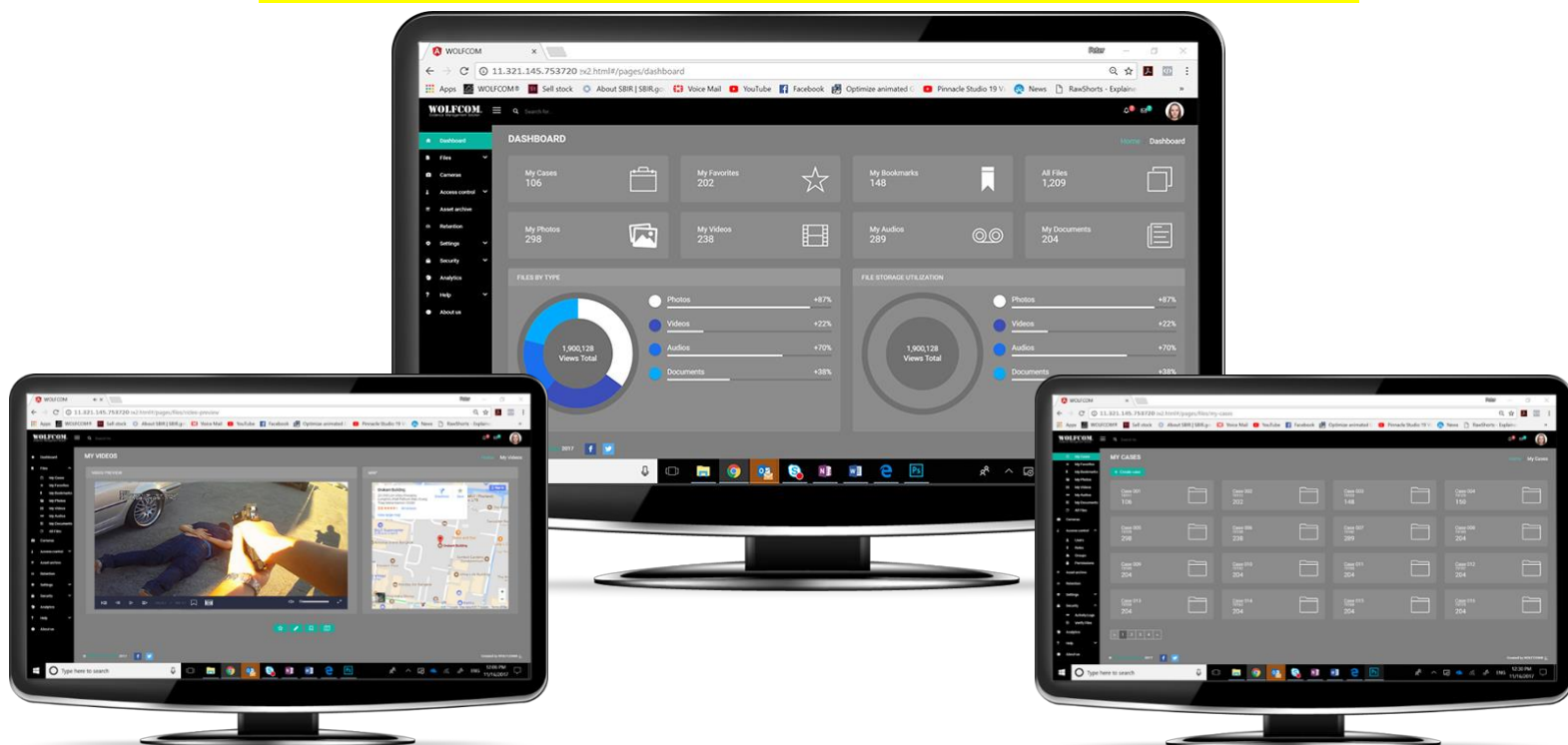


WOLFCOM® Evidence Management Software



2018 WOLFCOM® Evidence Management Software 2.0

Our new Evidence Management Software is now Web Based and completely scalable for the future. Access WEMS from any browser on your network. Now available as an On-Premises Solution.

The **WOLFCOM Evidence Management Solution** is a robust and flexible digital evidence management solution that can manage your video assets, photos, audio files, and documents. A user, with proper rights and privileges, will be able to tag, view, verify integrity of the asset, generate an audit trail report, and automatically purge the files based on the department's retention policies.

Have just one system to manage all your digital evidence.

The WOLFCOM Evidence Management Solution is designed to manage all your department's digital evidence from body camera videos, digital pictures, in-car videos, surveillance camera videos, documents, audio recordings and other standard media files. This allows officers the ability to quickly find and view digital evidence. WOLFCOM knows that no two agencies are exactly alike. Our approach is to identify your unique challenges and develop a solution that addresses and solves problems for your department.

Universal Dashboard

Having a simple Widget Application Dashboard makes use of the software easy and familiar. Because it is a recognizable platform, there will be no learning curve for Admins and Users.

Finding a file is quick and easy.

The intuitive user interface is officer-friendly and simple to use. Thumbnail file preview allows you to see thumbnails of picture or preview a video to make sure you have the correct file. Having all your information easily accessible in one place allows officers to spend more time fighting crime and less time wrestling with digital files. All metadata from a file is searchable by date, times, location, camera, officer, room numbers and much more. Evidence can be viewed from any department computer on the network. Wolfcom can provide either a web-based or a client/server based solution, based on your department's preference.

Evidence is organized by Case Number.

Law Enforcement activities are categorized by a Case Number or similar identifier; this allows the officers to organize all digital evidence from that case to a specific Case Number. So, when they pull up a case, they can view all the digital evidence affiliated with that case.

Define access levels to evidence.

The WOLFCOM Evidence Management Solution allows each department to dictate what evidence can be viewed by each user. Groups and Organizations are configured to align with the policies of your department. This will all be customizable.

Always protect your chain of custody.

All activity is logged by the system. An audit trail report displays who, what, when and where files have been accessed. With this system, you will not lose a case because a break in chain of custody.

File Authentication

Once a file is ingested into the WOLFCOM Evidence Management Solution, the files will be stamped with a SHA2 256-bit Hash. This will assure the files will be authentic and admissible in court.

Configure file retention periods.

Only store critical information and automatically delete evidence once expired. The WOLFCOM Evidence Management Solution allows evidence to be purged from the system based upon configured retention periods or by an authorized user. Schedule retention period by evidence type or by crime type.

GPS GeoTagging Map can be viewed on software.

With GPS enabled body cameras, GPS coordinates are stamped onto every video and picture file, frame by frame and picture by picture. When reviewing videos our WEMS, you will be able to see the route of the video simultaneously on the map next to the video and as the video moves so does the dot on the map. This is valuable when reviewing video of a foot or car chase as you'll be able to see the exact route taken as footage of the chase unfolds before you.

Our WEMS 2.0 has the following Features

MODULES	FEATURES / FUNCTIONS	MODULES	FEATURES / FUNCTIONS
Dashboard	<ul style="list-style-type: none"> - Quick Access Widgets - Quick Analytics and Report - Custom Widgets (On-demand) 	Camera Management	<ul style="list-style-type: none"> - Device Inventory - Device Status and Condition tracking - Import Devices - Export Devices
Digital Evidence Storage	<ul style="list-style-type: none"> - Cases - Favorites - Bookmarks - Photos - Videos - Audios - Documents 	Access Control	<ul style="list-style-type: none"> - User Management - Role Management - Group Management - Permission Management - Active Directory and LDAP Integration - User Activity Report generation
Digital Evidence Management	<ul style="list-style-type: none"> - File Listing (List View and Grid View) - Quick Search and Sort - Upload Files - Download Files - Edit Metadata - Audit Report - Burn to ISO - Export Metadata - Add/Remove Favorites - Batch Actions (Download, Delete, Audit Report and Burn to ISO) - Custom Metadata fields (up to 5 extra metadata fields) - Case Notes - Document Preview 	Retention Module	<ul style="list-style-type: none"> - Add and Manage Retention Policies - Automated Retention Policy Scheduling and Triggers - Archive Policy - Purge Policy
Video Tools	<ul style="list-style-type: none"> - Bookmark - Snapshot - Crop Video - Merge Video - GPS Map - Automated Redaction (Optional) - Advanced Video Editing tools (Optional) - Automated Transcriptions (Optional) - Facial Recognition (Optional) 	Settings	<ul style="list-style-type: none"> - Add System Language pack - Switch System Language - Database Configuration - Web App Configuration - Picklist Editor - License / Activation
Search	<ul style="list-style-type: none"> - Basic Keyword search - Advanced and Filtered Search 	Security Module	<ul style="list-style-type: none"> - Encryption SHA2 256-bit Hash - Automated Event logging (All system actions) - Display Activity logs - Search Activity Logs - Export Activity Logs - Verify File Authenticity (SHA-256 String or File Upload) - Download / Print File Authenticity Certificate
		Analytics	<ul style="list-style-type: none"> - Quick Reports - Advanced Analytics - Custom Reports (On-demand) - Print Report - Export Reports
		Help and Support	<ul style="list-style-type: none"> - Online User Guide and Wiki - Video Tutorials - Create Support Tickets & Send Feedback

Our Complete Body Camera Solution

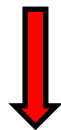
Reliable, Easy to use, and Hassle free



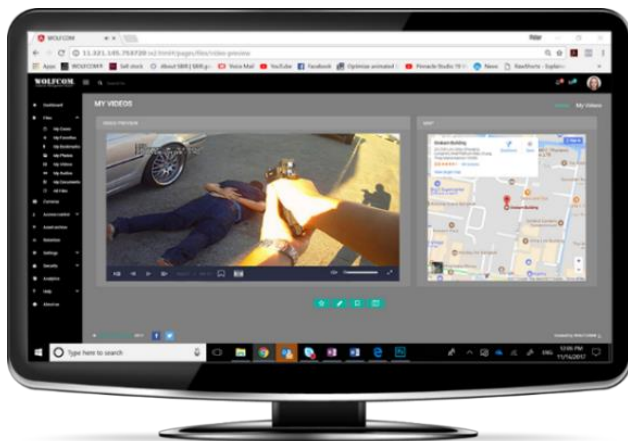
1. Your Officers start their day with our body cameras.

2. While in the field, officers can tag and classify body camera footage with our mobile app.

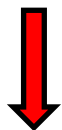
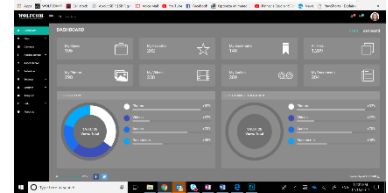
3. At the end of their shift, your Officers plug our body cameras into our Smart Docking Stations. It detects the cameras and downloads all the files to the server.



4. The WOLFCOM Evidence Management Software (WEMS) is installed on the server and organizes and encrypts the files.



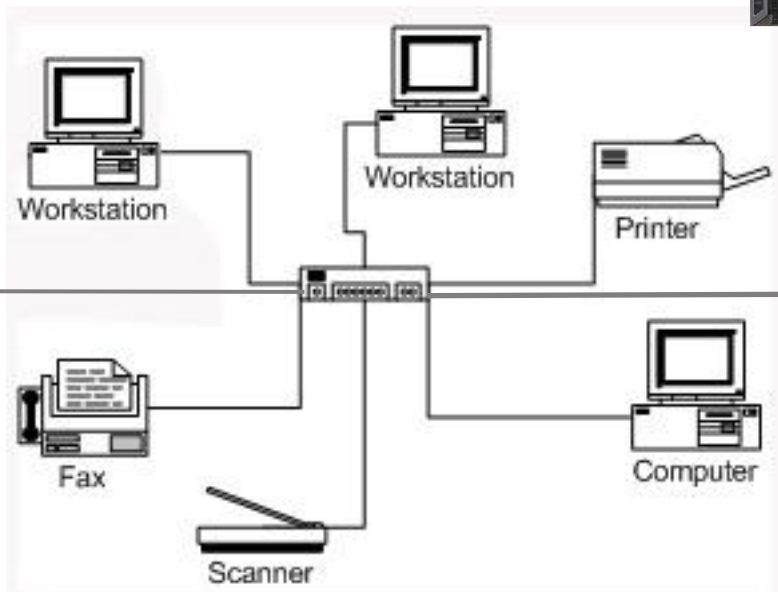
6. Open a browser and access your body camera files using our WEMS Web App from any client workstation connected to the network. Officers can access files according to their roles and permissions.



5. The WOLFCOM Server is connected to your network.



Workstation



Model: X1 Smart Docking Station

Our Smart Docking Station can be connected to the WOLFCOM Server or to your network. One Station can accommodate up to 18 cameras.
(docking stations not included)

Every department may require different setup configurations.
Let us help you choose the best fit



Mobile Client

Wolfcom Mobile App, an Officer can now Tag and Classify video and photo files in the field without having to wait until he or she returns to the station. The Officer can view, playback, fast forward, rewind and pause a video.



Hardware & OS Requirements

Server Station:

Server

Operating System: Will only work with:

Windows 10 Pro, 10 Enterprise (64-bit only)

Windows Server 2016 (64-bit only)

WEMS will not work with any Windows HOME edition operating systems or any Windows 32-bit operating systems or any version of Windows older than Windows 10

CPU / Memory: Minimum 2.4GHz DC / 8GB RAM

Hard Drive: Minimum 256GB (SSD Hard Drives recommended)

Video/image Storage: Large DAS or NAS Storage (use Wolfram calculator to estimate size of storage)

Graphics: VGA Adapter

Network: Dual 1GbE NIC (Teaming Capable)

Display: Minimum 1024x768 Resolution Monitor

USB Ports: Minimum 3 x USB 2.0 ports (USB 3.0 recommended)

Application Size: Less than 100MB

BIOS: Enable Virtualization

Client Station:

Client

Operating System: Windows 10 Pro, 10 Enterprise (64-bit only)

WEMS will not work with any Windows HOME edition operating systems or any Windows 32-bit operating systems or any version of Windows older than Windows 10

CPU / Memory: Minimum 2.4GHz DC / 4GB RAM

Hard Drive: Minimum 100GB

Video/image Storage: Not Required (All files stored directly in Server)

Graphics: Intel HD 4000, NVidia or AMD GPU adapter

Network: 1GbE

Display: 17" 1080P Monitor (1920x1200 recommended)

USB Ports: Minimum 3 x USB 2.0 ports (USB 3.0 recommended)

Application Size: Less than 50MB

Net Runtime: Latest version of 4x

Optional: DVD writer (dual-layer/Blu-ray burners supported) Internet

Software & Network Requirements:

Virtual Machine:

- Enable Hyper-V
- Enable Hyper-V Management Tools
- Enable Hyper-V Platform
- Hyper-V Management Console 3.0 version 1709 and above
- Hyper-V Manager version 10.0.16299.15 and above

.NET Runtime:

- Microsoft .NET Framework 4.6 or above
- Microsoft Visual C++ Redistributable for Visual Studio 2012 Update 4 (32-bit and 64-bit)
- Microsoft Visual C++ Redistributable for Visual Studio 2013 (32-bit and 64-bit)
- Microsoft Visual C++ Redistributable for Visual Studio 2015 (32-bit and 64-bit)

Network/Firewall:

WEMS requires certain ports on your firewall are open. The following ports are required to be open on the server. Firewall must allow SQL Server, Web Server and file sharing traffic.

- Server should have a static (fixed) IP address when registered to network. The IP address of Server should not change at any time.

Browser:

- Microsoft Edge 38 or later
- Firefox 40 or later
- Chrome (latest version)
- Safari (latest version)

Note: WEMS Web app does not support **Windows Explorer** web browser

Media Players:

- Apple QuickTime 7 or later
- Windows & TV player 10 or later (only for Windows 10)
- VLC v2 or later
- Flash 10

Storage Drive Requirements:

External or Network Storage (NAS or SAN drives):

- External / Network drives MUST be connected and mounted reliably to Server or PC as a iSCSI drive
- External / Network drives MUST be protected from power failure and disconnection (recommend to use UPS)
- Network drives MUST be connected to a reliable LAN or WAN network with a good bandwidth/speed

Software & Network Requirements:

.NET Runtime:

- Microsoft .NET Framework 4.6 or above
- Microsoft Visual C++ Redistributable for Visual Studio 2012 Update 4 (32-bit and 64-bit)
- Microsoft Visual C++ Redistributable for Visual Studio 2013 (32-bit and 64-bit)
- Microsoft Visual C++ Redistributable for Visual Studio 2015 (32-bit and 64-bit)

Browser:

- Microsoft Edge 38 or later
- Firefox 40 or later
- Chrome (latest version)
- Safari (latest version)

Note: WEMS Web app does not support **Windows Explorer** web browser

Media Players:

- Apple QuickTime 7 or later
- Windows & TV player 10 or later (only for Windows 10)
- VLC v2 or later
- Flash 10